

ez-DSK

TROUBLE SHOOTING MANUAL

TABLE OF CONTENT

1. CHECK YOUR COMPUTER SPECIFICATIONS
2. CHECK YOUR USB 3.0 CABLE
3. CHECK YOUR POWER SUPPLY CONNECTION
4. UNCHECK "SHOW PREVIEW VIDEO"
5. CHECK YOUR GRAPHIC CARD SETTING AND DRIVER UPDATE
6. ANY TROUBLE ISSUE AFTER WINDOWS 10 UPDATE?
7. CHECK YOUR COMPUTER'S STATUS

1. CHECK YOUR COMPUTER SPECIFICATIONS

- OS : Windows7, Windows8 or Windows10
- CPU : Intel i7 4th generation or above(Desktop)
Intel i7-7700HQ or above (Laptop)
- RAM : 8GB
- VGA : GeForce GTX 1050
- Resolution : 1920 x 1080
- Others : USB 3.0 Port

2. CHECK YOUR USB 3.0 CABLE

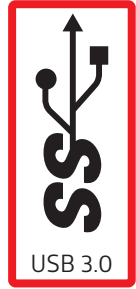
Please use
LUMANTEK'S USB 3.0 Cable



Check cable is connected in
proper location.



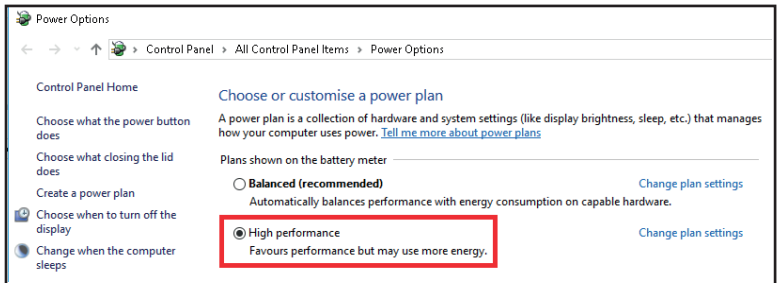
USB 2.0



USB 3.0

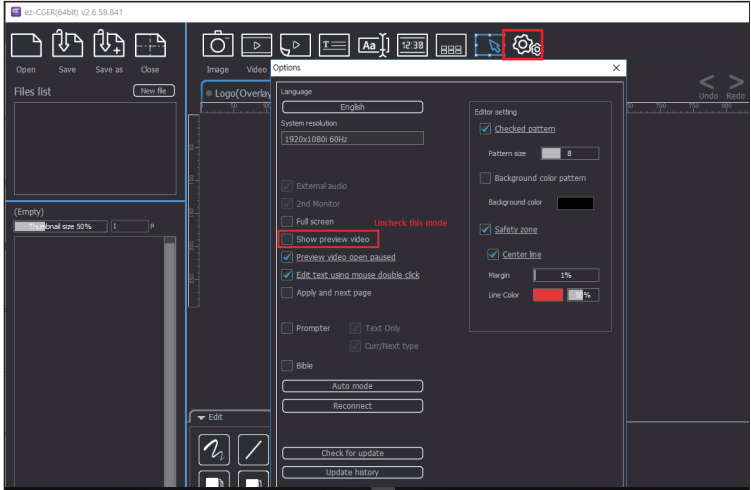
3. CHECK YOUR POWER SUPPLY CONNECTION

- Plug in power supply while you use in ez-DSK
- Change battery mode to general mode.
- Change to “High performance” mode



4. UNCHECK “SHOW PREVIEW VIDEO”

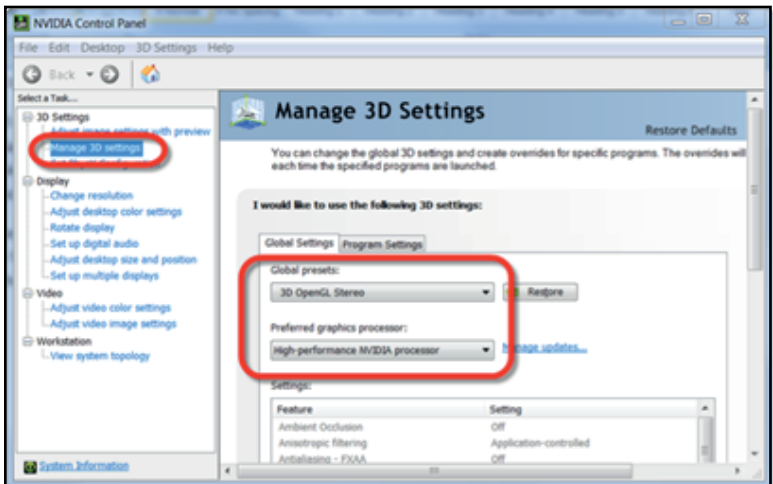
Preview mode is able to make your computer system slow.



5. CHECK YOUR GRAPHIC CARD SETTING AND DRIVER UPDATE

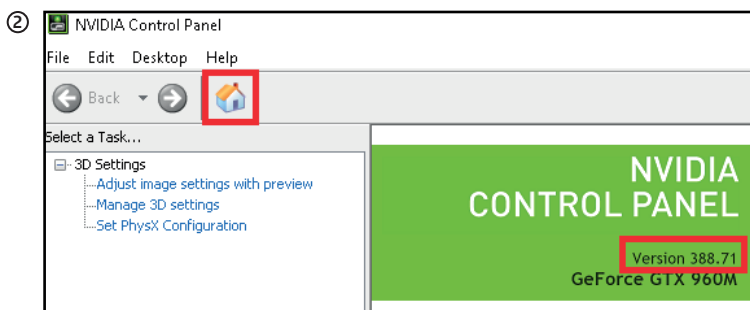
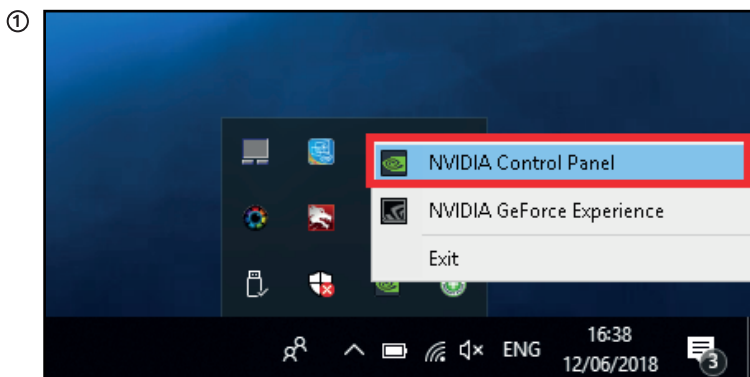
STEP 1) Check NVIDIA option setting

Check your NVIDIA is working at **“High-performance NVIDIA processor”** mode



5. CHECK YOUR GRAPHIC CARD SETTING AND DRIVER UPDATE

STEP 2) Check NVIDIA version at NVIDIA Control Panel

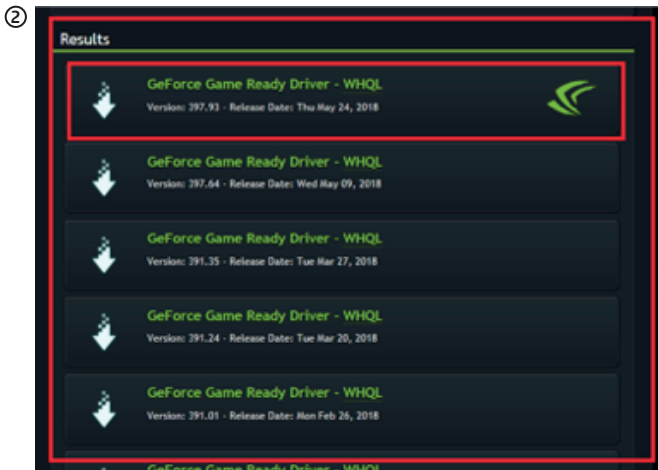
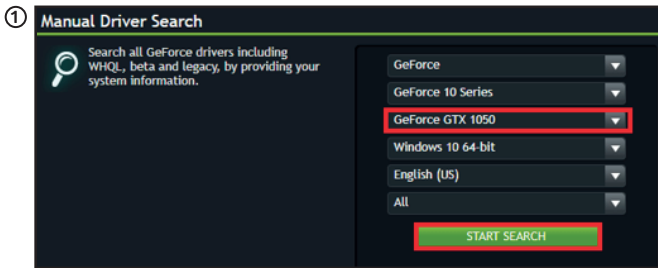


5. CHECK YOUR GRAPHIC CARD SETTING AND DRIVER UPDATE

STEP 3) Update NVIDIA Version by Manually.

Please refer to following website: <https://www.geforce.com/drivers>

Please find the most updated version.



5. CHECK YOUR GRAPHIC CARD SETTING AND DRIVER UPDATE

Download and install in your computer.



The image shows a dark-themed user interface for downloading a GeForce Game Ready Driver. On the left, there is a list of specifications. On the right, there is a prominent green 'DOWNLOAD' button with a red border.

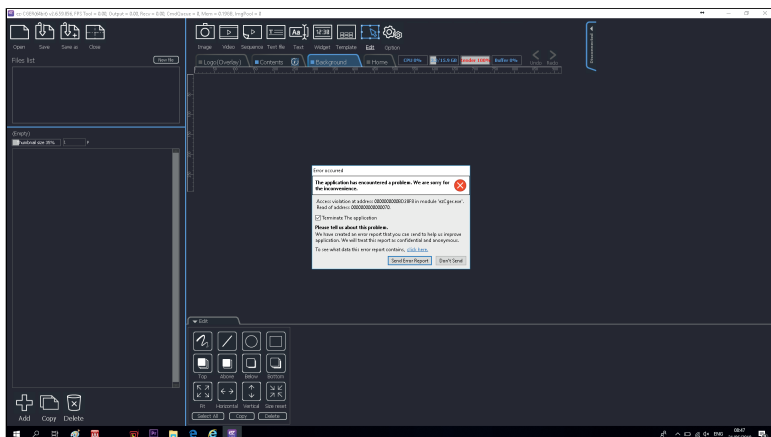
| GeForce Game Ready Driver | |
|---------------------------|-------------------|
| Version | 397.93 - WHQL |
| Release Date | Thu May 24, 2018 |
| Operating System | Windows 10 64-bit |
| Language | English (US) |
| File Size | 492.17 MB |

[DOWNLOAD](#)

6. ANY TROUBLE ISSUE AFTER WINDOWS 10 UPDATE?

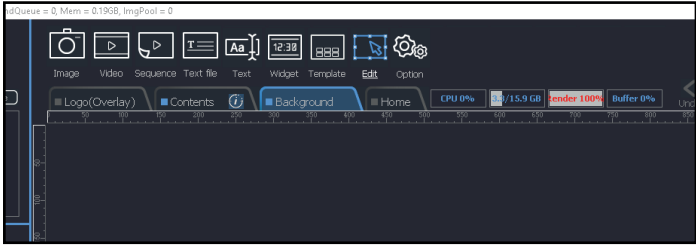


Please run "ez-CGER(32 bit)"



7. CHECK YOUR COMPUTER'S STATUS

You can easily see your computer's status in real-time by diagnostic tool



IF YOU STILL HAVE THE PROBLEM?
CONTACT LUMANTEK AT
GS@LUMANTEK.COM

LUMANTEK
CUSTOMER SERVICES
GS@LUMANTEK.COM
TEL(DIR) : +82-2-6947-7429
FAX : +82-2-6947-7440

LUMANTEK