

**ez-SHV+**

***SDI to HDMI  
Converter with  
Display and Scaler***

OPERATION  
MANUAL

REVISION NUMBER: 1.0.0

DISTRIBUTION DATE: NOVEMBER. 2018

#### **Copy Rights**

**Copyright © 2006~2018 LUMANTEK Co., Ltd.**

**All Rights Reserved**

This document contains information that is proprietary to LUMANTEK.CO., LTD. The information in this document is believed to be accurate and reliable; however, LUMANTEK assumes no responsibility or liability for any errors or inaccuracies that may appear in this document, nor for any infringements of patents or other rights to third parties resulting from its use.

This publication may contain technical issues, inaccurate information or typos. These will be revised in revised edition, if there is any. No part of this publication is subject to be reproduced, stored in retrieval system, or transmitted in any forms, or any means without the prior consent by Lumantek.

#### **Trademarks**

HD ENCODULATOR TM, SD ENCODULATOR TM LUMANTEK Logo, Mega CruiserTM, ORIXTM, X-CruiserTM, DTA-PlusTM, Media BlasterTM, are Trademarks of Lumantek. Co., Ltd.

Any other trademarks than stated above in this document belongs to its pertinent corporation.

#### **Warranty Period**

Lumantek's products comes with One(1) year limited warranty. Please contact below if you need more information.

#### **LUMANTEK CUSTOMER SERVICES**

**gs@lumantek.com**

**TEL: +82-2-6947-7400**

**FAX: +82-2-6947-7440**

**LUMANTEK**

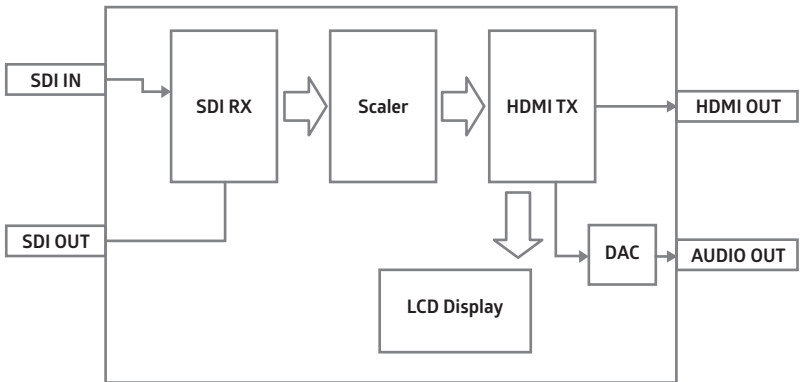
# 01. ez-SHV+ (SDI to HDMI Converter with Display and Scaler)

Lumantek's ez-SHV+ is an SDI to HDMI converter with Display and Scaler. The ez-SHV+ does more than just converting. Through its 2.7 inch TFT-LCD, it displays the video input. The display also shows eye pattern for video quality monitoring, resolution of incoming / outgoing video, and approximate cable length relative to the quality of the video resolution and cable.

## Features

- ① Inputs & outputs
  - Input: 1 x SD/HD/3G-SDI (BNC 75Ω)
  - Output: 1 x SD/HD/3G HDMI (Type A)
  - 1 x SD/HD/3G-SDI loop (BNC 75Ω)
  - 1 x Analog audio (3.5mm stereo jack)
- ② Supports SD/HD/3G
- ③ TFT-LCD Display (2.7 inch)
- ④ Push switch for mode change

## Diagram





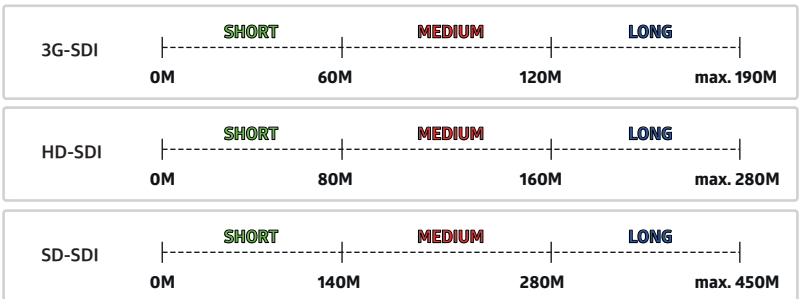
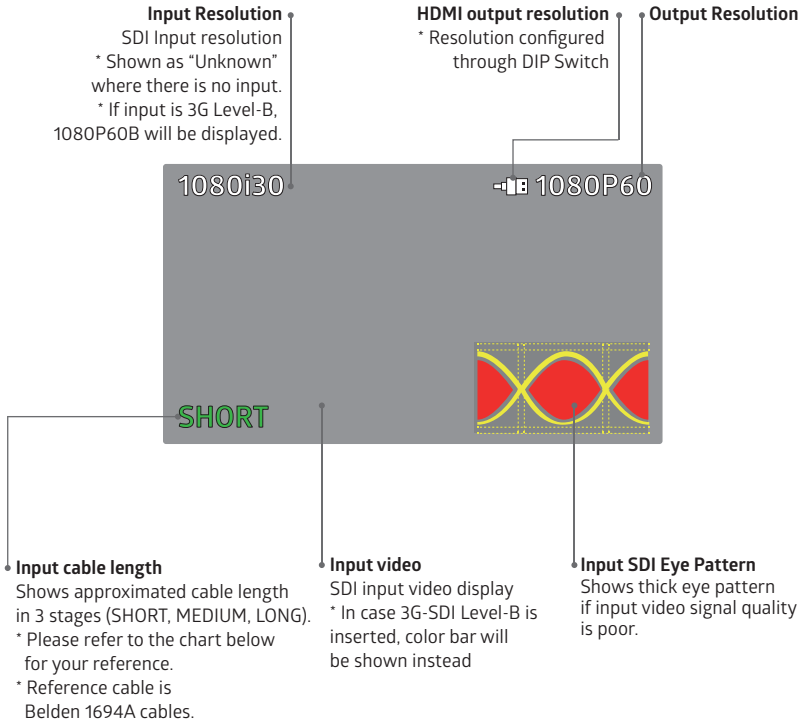
## 02. Interface

### DIP Switch Settings

<p style="text-align: center;"><b>VIDEO OUT</b></p> <p>1 2 3 4</p> <p>480i59.94</p> <p>576i50</p> <p>720p50</p> <p>720p59.94</p> <p>720p60</p> <p>1080i50</p> <p>1080i59.94</p> <p>1080i60</p> <p>1080p23.98</p> <p>1080p24</p> <p>1080p25</p> <p>1080p29.97</p> <p>1080p30</p> <p>1080p50</p> <p>1080p59.94</p> <p>1080p60</p>	<p><b>VIDEO OUT : Video output resolution (Position 1, 2, 3, 4)</b></p> <ul style="list-style-type: none"><li>- 720x480i@59.94 (DIP SW : 1111)</li><li>- 720x576i@50 (DIP SW : 0111)</li><li>- 1280x720p@50 (DIP SW : 1011)</li><li>- 1280x720p@59.94 (DIP SW : 0011)</li><li>- 1280x720p@60 (DIP SW : 1101)</li><li>- 1920x1080i@50 (DIP SW : 0101)</li><li>- 1920x1080i@59.94 (DIP SW : 1001)</li><li>- 1920x1080i@60 (DIP SW : 0001)</li><li>- 1920x1080p@23.98 (DIP SW : 1110)</li><li>- 1920x1080p@24 (DIP SW : 0110)</li><li>- 1920x1080p@25 (DIP SW : 1010)</li><li>- 1920x1080p@29.97 (DIP SW : 0010)</li><li>- 1920x1080p@30 (DIP SW : 1100)</li><li>- 1920x1080p@50 (DIP SW : 0100)</li><li>- 1920x1080p@59.94 (DIP SW : 1000)</li><li>- 1920x1080p@60 (DIP SW : 0000)</li></ul>
<p style="text-align: center;"><b>RATIO</b></p> <p>5</p> <p>Full</p> <p>Letter PillarBox</p>	<p><b>RATIO : Video output screen ratio (Position 5)</b></p> <ul style="list-style-type: none"><li>- FULL 16:9 (DIP SW : 1)</li><li>- Latter 4:3 or Pillar Box (DIP SW : 0)</li></ul>
<p style="text-align: center;"><b>BRIGHTNESS</b></p> <p>6</p> <p>Dark</p> <p>Bright</p>	<p><b>BRIGHTNESS : LCD brightness (Position 6)</b></p> <ul style="list-style-type: none"><li>- Dark (DIP SW : 1)</li><li>- Bright (DIP SW : 0)</li></ul>

## 02. Interface

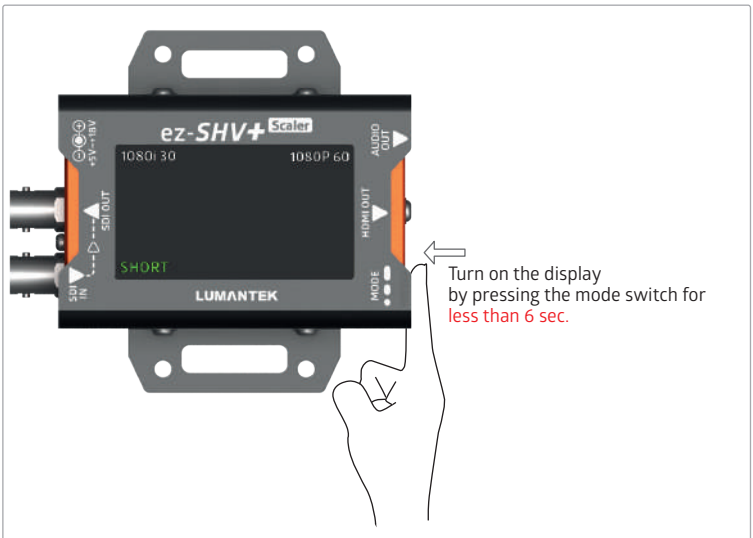
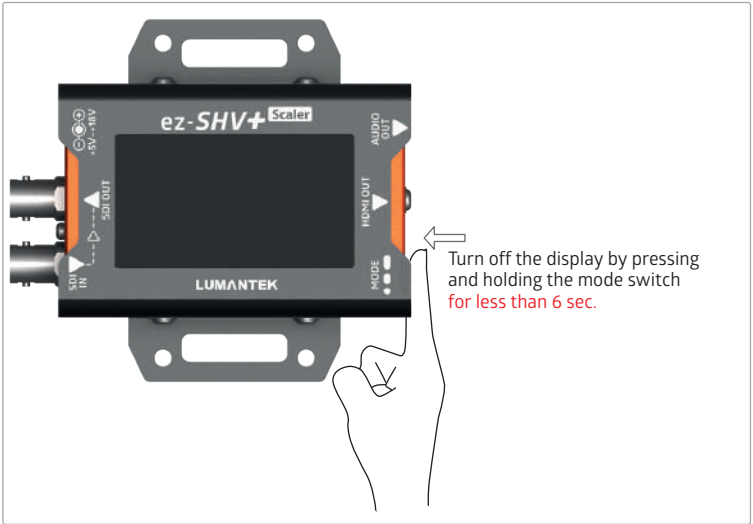
LCD Display



## 02. Interface

### LCD Display

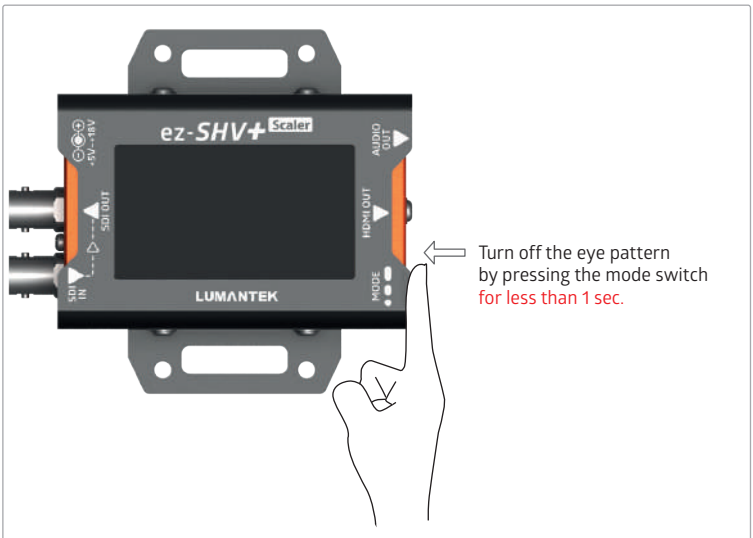
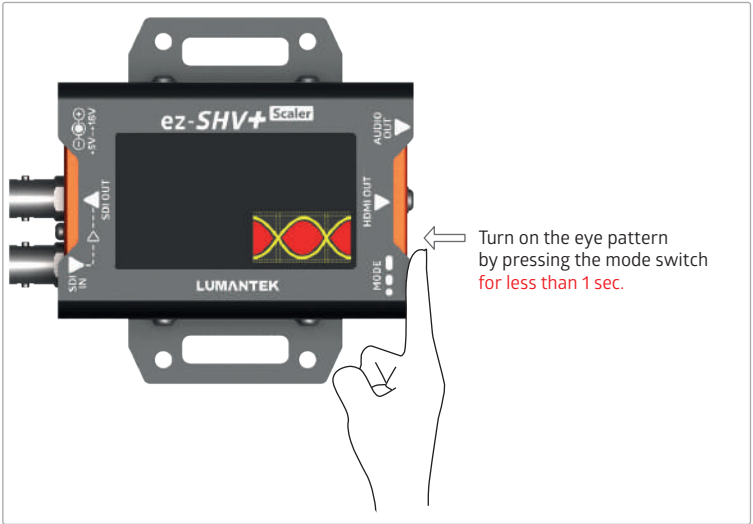
#### ① LCD Display ON/ OFF



## 02. Interface

### LCD Display

#### ② SDI input eye pattern ON/ OFF

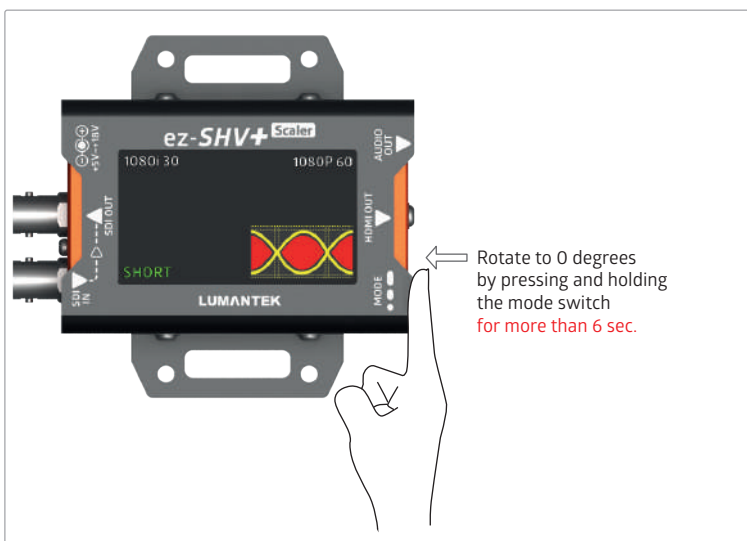
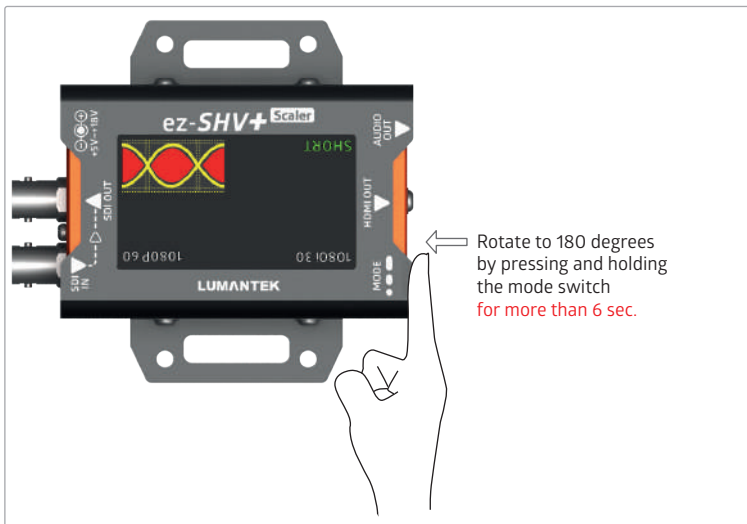




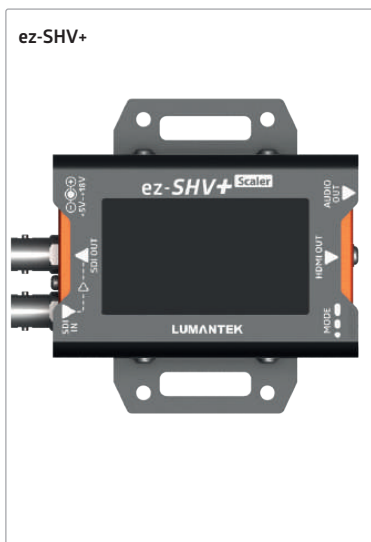
## 02. Interface

### LCD Display

#### ③ LCD monitor rotation (by 0 or 180 degrees)



### 03. Product Configuration



## 04. Technical Specifications

ez-SHV+

### Data Input

SDI Video Input: SD/HD/3G-SDI (BNC 75Ω) x1

Video Formats:

- 720x480i@59.94/60
- 720x576i@50
- 1280x720p@50/59.94/60
- 1920x1080i@50/59.94/60
- 1920x1080p@23.94/24/25/29.97/30
- 1920x1080p@50/59.94/60  
(3G-SDI Level-B not supported)

### Data Output

SDI LOOP Output: SD/HD/3G-SDI (BNC 75Ω) x1

Audio Output: Stereo Jack x1

HDMI Video Output: SD/HD/3G  
(HDMI Type A) x1

Video Formats:

- 720x480i@59.94 (DIP SW : 1111)
- 720x576i@50 (DIP SW : 0111)
- 1280x720p@50 (DIP SW : 1011)
- 1280x720p@59.94 (DIP SW : 0011)
- 1280x720p@60 (DIP SW : 1101)
- 1920x1080i@50 (DIP SW : 0101)
- 1920x1080i@59.94 (DIP SW : 1001)
- 1920x1080i@60 (DIP SW : 0001)
- 1920x1080p@23.98 (DIP SW : 1110)
- 1920x1080p@24 (DIP SW : 0110)
- 1920x1080p@25 (DIP SW : 1010)
- 1920x1080p@29.97 (DIP SW : 0010)
- 1920x1080p@30 (DIP SW : 1100)
- 1920x1080p@50 (DIP SW : 0100)
- 1920x1080p@59.94 (DIP SW : 1000)
- 1920x1080p@60 (DIP SW : 0000)

### Connections

Power : DC Power Input (DC Jack) x1

DIP Switch : (6 Pole) x1 Video In/Out Resolution,  
Video Output Ratio, LCD Brightness

MODE : (Push Switch) x1 LCD ON/OFF, Menu  
Selection

### Display

2.7 inch TFT LCD : Input Video Display, Input SDI  
Eye Pattern, In/Output Video Resolution Display,  
Input Cable Length

### Electrical

Power Input: DC +5V to +18V

Power Consumption: 3W(max.)

Operation Temperature: 0~45°C

### Physical

Dimension: 86.3 (H) x 57.2 (W) x 26.6 (D) (mm)

Weight: 0.3 kg (0.66 lb)

LUMANTEK CUSTOMER SERVICES

[gs@lumantek.co.kr](mailto:gs@lumantek.co.kr)

TEL(Dir) : +82-2-6947-7429

FAX: +82-2-6947-7440

**LUMANTEK**